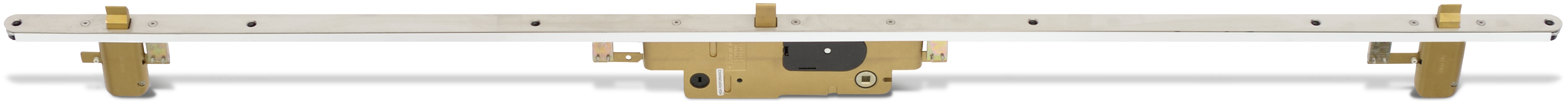


TRILENNIUM<sup>®</sup>

MULTI-POINT LOCKING SYSTEMS

Protect your home. Preserve your style.

# The **perfect** multi-point lock for an imperfect world.



**Trilennium®**  
**Works.**

Between impractical installation and the difficulty of keeping an 8' door straight, multi-point locks can be a nightmare for you. Poor alignment means service calls and unhappy homeowners. Not so with Trilennium®. Trilennium® Multi-Point Locking Systems work when others don't.

**Makes everything**  
**Stronger.**

A solid, one piece I-Beam runs the full length of the lock. That not only increases the strength and precision of the lock, but when Trilennium® is installed, it actually strengthens the door edge and prevents door warping over the life of the panel.

**Three times**  
**Secure.**

Trilennium® features three full deadbolt locks for ultimate strength and security. No hooks or catches that require unrealistic alignment and result in frequent service calls. Among the strongest and most secure in the industry, Trilennium® Multi-Point Locking Systems exceed Grade 30—or **300 ft-lbs x 2 of impact, per ASTM E 2395.**

**Installation that's**  
**Forgiving.**

When a door unit leaves the shop, it can be perfect. But you can't control the rough opening, or what happens over time. Out of plumb. Out of square. Or worse. That's where we come in. Trilennium's patented system of bolts and roller strikes draws the door back into perfect alignment, correcting imperfections up to 3/16" in three directions.

**Shop**  
**Friendly.**

Solid one-piece construction means no finicky lock pre-assembly before installing the lock in the door. The lock arrives ready to drop into a routed door stile. Faster set-up, fewer steps in the shop and more accurate machining save time and money.

**Easy to**  
**Own.**

Premium hardware is available for any door system in styles to match every decor. Unlike European-style systems, Trilennium® operates intuitively; a single turn of the key or thumb-turn activates all three deadbolts smoothly. Plus, with the Panic Release feature, just one turn of the interior lever deactivates all three bolts at once for even easier operation.

**How Trilennium® works:**



**1. Look familiar? The door is misaligned.** In other multi-point systems, the lock would fail to engage, resulting in an unhappy homeowner and costly service call for you or your customer. Not so with Trilennium®.



**2.** When the door is closed, the angled shoulder of Trilennium's Bolts pre-engage with the Roller Strikes to fight deflection at all times and deliver smooth operation time after time.



**3.** As lock is activated, Trilennium's patented Roller Strikes and Bolts pull the panel into perfect alignment, correcting misalignment in three directions, and arming the door with three deadbolts that cannot be compromised.



Heavy-duty rails with precise router carrier, guides, bridges, stops and cross-bore guides make installation simple and flawless.

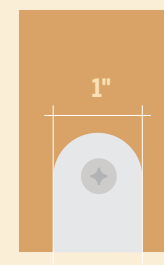


Panic Release opens the lock with a single downward turn of the interior lever.

### 3000

Single Door  
Active Panel of  
Double Door  
Book Edge

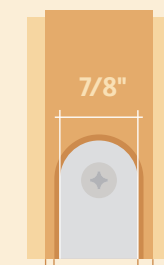
**1" Face Plate**  
The 3000 delivers the strength and security of the Trilennium® Multi-Point Locking System to standard 1.75" book edge doors.



### 3070

Single Door  
Active Panel of  
Double Door  
Proud Edge

**7/8" Face Plate**  
Better routing margins and fit for proud edge or bull nose door stiles. Allows specification for more door panels.



Routing Margin using 3000 Series  
Routing Margin using 3070 Series

### 3500

Double Door  
Active Panel

3020 Compatible Only

**1" Face Plate**  
The 3500 runs the full length of the door stile and provides two additional lock points into the header and sill for the active panel of double door applications. Delivers maximum strength and maximum security within the Trilennium® lock series.



Detail: Flush Bolt

### 3020

Double Door  
Inactive Panel

**1" Width**  
The I-Beam construction of the 3020 overcomes inherent inactive door panel weakness. The 3020 eliminates panel deflection and provides a solid metal cup for the deadbolt. Both features greatly increase the strength and security of the inactive door.

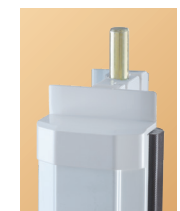


Detail: Bolt Receiver

### Endura Trilennium® Compatible Astragal

Double Door  
Inactive Panel

**Works with 3000 and 3070**  
The Endura Trilennium® Compatible Astragal is an Endura Ultimate Astragal configured to work with Trilennium® locks. Two additional locking points and the unbeatable weather protection of the Ultimate Flip Lever™ Astragal combine with the strength and security of the Trilennium® Multi-Point Locking System for a powerful French door solution.



Detail: Flush Bolt



- 3000/3070 BENEFITS:**
- 3-Point Locking, industry-leading strength and protection
  - Patented I-Beam Construction
  - Fights deflection, prevents and corrects panel misalignment
  - Easy operation, now and in the years to come
- 3000/3070 OPTIONS & COMPATIBILITY FOR DOUBLE DOORS:**
- 3000/3070 + 3020 (with Dummy Astragal)
  - 3000/3070 + Trilennium Compatible Astragal



- 3500 BENEFITS:**
- 5-Point Locking, enhanced strength and protection
  - Patented I-Beam Construction
  - Fights deflection, prevents & corrects panel misalignment
  - Easy operation, now and in the years to come
- 3500 OPTIONS & COMPATIBILITY FOR DOUBLE DOORS:**
- 3500 + 3020 (with Dummy Astragal)
  - 3500 + Magnum Bolts (with Dummy Astragal)
  - Not Compatible with Trilennium Compatible Astragal



- 3020 BENEFITS:**
- 7-Point Locking (with 3500)
  - Inactive Panel Operated by Handset
  - Patented I-Beam Construction for Inactive Panel
- 3020 OPTIONS & COMPATIBILITY FOR DOUBLE DOORS:**
- 3020 + 3000
  - 3020 + 3070
  - 3020 + 3500

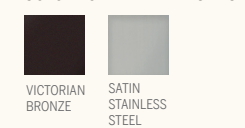


- TRILENNIUM COMPATIBLE ASTRAGAL BENEFITS:**
- 5-Point Locking (with 3000/3070)
  - Patented Flush Bolt, Floating Boot System - Enhanced sealing, forgiving installation
  - Patented Flip Lever + Matching Dummy Handset for easy operation, consistent style
  - Cost efficient - no extra materials needed, system pre-built within astragal.
  - Easy assembly, installation - No extensive routing. System housed within astragal.
- TRILENNIUM ASTRAGAL OPTIONS & COMPATIBILITY FOR DOUBLE DOORS:**
- 3000
  - 3070

3000/3500 FACE PLATE FINISHES



3070 FACE PLATE FINISHES



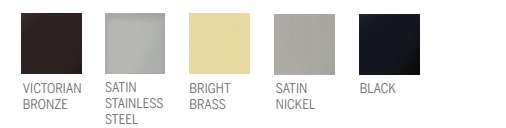
3000/3070/3500 STRIKE PLATE FINISHES



3020 STRIKE PLATE FINISHES



TRILENNIUM COMPATIBLE ASTRAGAL STRIKE PLATE FINISHES

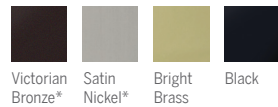


Level One Trilennium® Hardware



Eclipse Entry Set  
SHOWN IN SATIN NICKEL

Available in:



Pinnacle Entry Set  
SHOWN IN VICTORIAN BRONZE

Available in:



Rectangular Entry Set  
SHOWN IN BLACK

Available in:



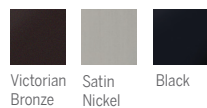
Horizon Entry Set  
SHOWN IN BRIGHT BRASS

Available in:



Curved Entry Set  
SHOWN IN SATIN NICKEL

Available in:



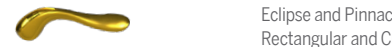
**Trilennium Hardware Lever Options**



Eclipse Lever SHOWN IN SATIN NICKEL | Pinnacle Lever SHOWN IN VICTORIAN BRONZE



Rectangular Lever SHOWN IN BLACK | Curved Lever SHOWN IN VICTORIAN BRONZE



Horizon Lever SHOWN IN BRIGHT BRASS

Eclipse and Pinnacle, and Rectangular and Curved levers are interchangeable and available upon request on all new orders.

The Trilennium Hardware collection combines elegant design with precision engineering for beautiful, reliable performance.

Trilennium Hardware is available in entry, inactive and dummy functions.



Eclipse Grip Handle  
SHOWN IN VICTORIAN BRONZE

Available in:



Level Two EMTEK®



Modern Entry Set  
SHOWN IN POLISHED CHROME

Stainless Steel Entry Set  
SHOWN IN BRUSHED STAINLESS STEEL

Arched Entry Set  
SHOWN IN MEDIUM BRONZE PATINA

Rectangular Entry Set  
SHOWN IN MEDIUM BRONZE PATINA

Tuscany Entry Set  
SHOWN IN FLAT BLACK PATINA

EMTEK® brings interesting, well made hardware back into American homes. All EMTEK® Hardware is available for entry, patio, inactive and dummy functions.

**EMTEK® Lever Options**

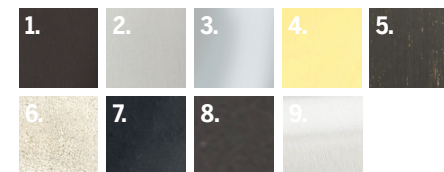
Available levers appear below escutcheon types.

Modern	Stainless Steel	Rectangular & Arched
Aireon SHOWN IN SATIN NICKEL	Athena SHOWN IN BRUSHED STAINLESS	Aurora SHOWN IN MEDIUM BRONZE
Argos SHOWN IN SATIN NICKEL	Cologne SHOWN IN BRUSHED STAINLESS	Cody SHOWN IN FLAT BLACK
Athens SHOWN IN FLAT BLACK	Dresden SHOWN IN BRUSHED STAINLESS	Cimarron SHOWN IN MEDIUM BRONZE
Basel SHOWN IN OIL RUBBED BRONZE	Helios SHOWN IN BRUSHED STAINLESS	Durango SHOWN IN MEDIUM BRONZE
Geneva* SHOWN IN OIL RUBBED BRONZE	Hermes SHOWN IN BRUSHED STAINLESS	Montrose SHOWN IN MEDIUM BRONZE
Hercules SHOWN IN POLISHED CHROME	Hercules SHOWN IN BRUSHED STAINLESS	Teton SHOWN IN MEDIUM BRONZE
Helios SHOWN IN OIL RUBBED BRONZE	Kiel SHOWN IN BRUSHED STAINLESS	Lariat SHOWN IN MEDIUM BRONZE
Hermes SHOWN IN SATIN NICKEL	Poseidon SHOWN IN BRUSHED STAINLESS	Yuma* SHOWN IN MEDIUM BRONZE
Luzern SHOWN IN OIL RUBBED BRONZE	Stuttgart SHOWN IN BRUSHED STAINLESS	
Mercury SHOWN IN FLAT BLACK		

**Tuscany**

- Medici SHOWN IN MEDIUM BRONZE
- Napoli SHOWN IN MEDIUM BRONZE
- Octagon SHOWN IN FLAT BLACK
- Padua SHOWN IN MEDIUM BRONZE

- Finishes**
- OIL RUBBED BRONZE
  - SATIN NICKEL
  - POLISHED CHROME
  - SATIN BRASS
  - MEDIUM BRONZE PATINA
  - TUMBLED WHITE BRONZE
  - FLAT BLACK
  - FLAT BLACK BRONZE PATINA
  - BRUSHED STAINLESS STEEL



**Finish Availability**

MODERN	1, 2, 3, 4, 7
STAINLESS	9
ARCHED	5, 6, 8
RECTANGULAR	5, 6, 8
TUSCANY	5, 8



Rectangular Entry Set  
SHOWN IN MEDIUM BRONZE

\* For use on single door application only.

NOTE: EMTEK has a 3-5 week lead time. All sales are final.

Level Three Rocky Mountain Hardware®



Curved Entry Set SHOWN IN SILICON BRONZE MEDIUM  
 Rectangular Entry Set SHOWN IN SILICON BRONZE DARK  
 Stepped Entry Set SHOWN IN SILICON BRONZE MEDIUM  
 Arched Entry Set SHOWN IN WHITE BRONZE MEDIUM  
 Fleur De Lis Entry Set SHOWN IN SILICON BRONZE LIGHT  
 Arched Handle Grip Set SHOWN IN SILICON BRONZE RUST

Rocky Mountain Hardware Lever Options

Each escutcheon may be combined with any of the following levers and is available in your choice of ten patina finishes.



Every Rocky Mountain Hardware Entry set is available in all the styles listed below:

Entry Set

Entry, patio, inactive and dummy functions.

Grip Set

Grip sets are available in both *one-piece* and *sectional*\* styles for entry, patio, inactive and dummy functions.

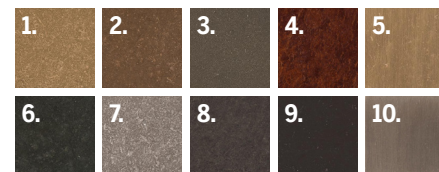
\*Fleur De Lis is not available in the Sectional Grip Set.

FINISHES

1. SILICON BRONZE LIGHT
2. SILICON BRONZE MEDIUM
3. SILICON BRONZE DARK
4. SILICON BRONZE RUST
5. SILICON BRONZE BRUSHED
6. SILICON BRONZE DARK LUSTRE
7. WHITE BRONZE LIGHT
8. WHITE BRONZE MEDIUM
9. WHITE BRONZE DARK
10. WHITE BRONZE BRUSHED



Arched Sectional SHOWN IN SILICON BRONZE DARK



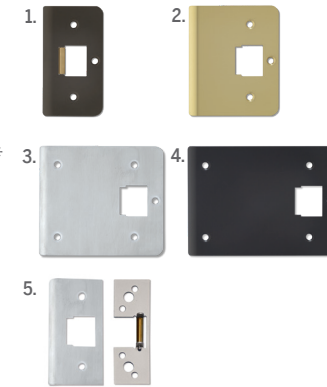
Strike Plates

1-3/4" and 2-1/4" strike plates are available.

Custom strike plates available up to 5-31/32".\*

1. 1-3/4" Strike
2. Extended Strike 3-1/4"
3. Extended Strike 4-1/2"
4. Extended Strike 5-1/2"
5. Endura Trilennium® Compatible Strike Kit\*\*

\*Set up charge applies.  
 \*\*Sold separately.



Head and Sill Receiver Kit

Mounts in header and sill to receive flush bolts for Trilennium® 3500 and 3020 lock sets or Magnum Bolts.

1. High Performance Kit For 3500/3020
2. Standard Kit 3500/3020
3. Standard Kit 3020

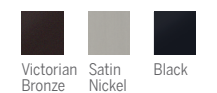


HANDSET FINISH AVAILABILITY

ECLIPSE & ECLIPSE GRIP



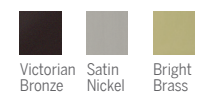
RECTANGULAR & CURVED



PINNACLE



HORIZON

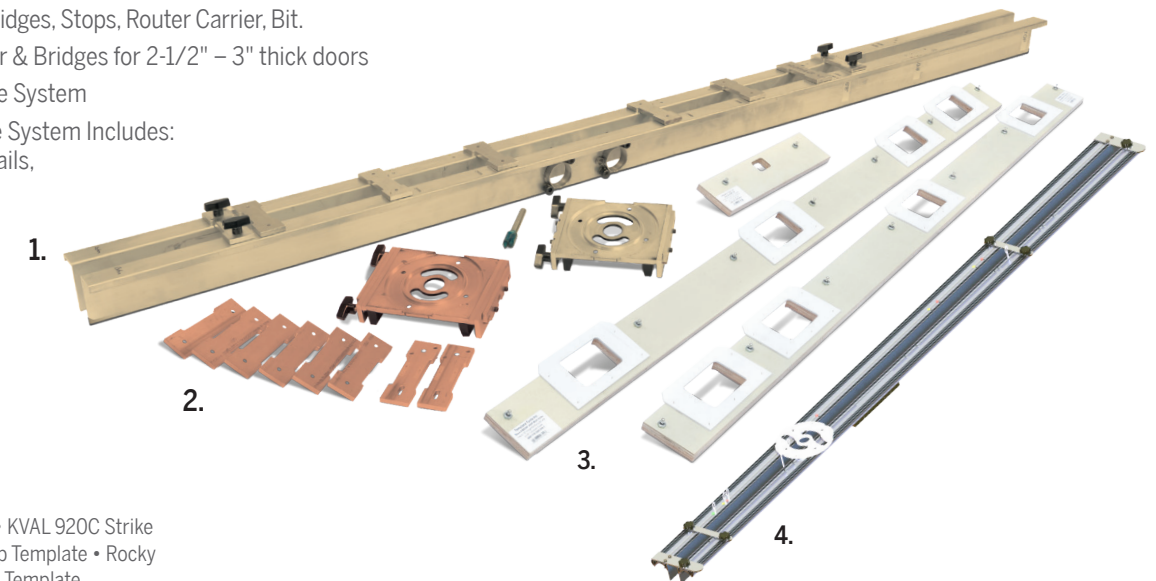


\* Available in TriLast™ Finish

Trilennium® Template Routing Systems

Complete template systems for routing the door stile and jamb are available including:

1. Trilennium® Template System Includes: Template Rails, Bridges, Stops, Router Carrier, Bit.
2. Thick Stile Router Carrier & Bridges for 2-1/2" – 3" thick doors
3. Templaco Jamb Template System
4. Trilennium® RS Template System Includes: Router Carrier, Template Rails, Stops and Router Bit.



Also Available

Norfield 250M Strike Template • KVAL 920C Strike Template • Eclipse Entrance Grip Template • Rocky Mountain Hardware Escutcheon Template

Magnum Bolts

Enhance wood astragal strength with Magnum Flush Bolts.



Construction Handles

Keep Trilennium® hardware safe during construction by using construction handles until final walkthrough. Available in 1-3/4", 2-1/4", 2-3/4" and 3" sizes.



Outswing Sill Cup

For use on outswing sill applications to provide a sealed locking point for the bottom flush bolt of the 3020 or Magnum Bolt.



Dust Box

Installs behind the strike plate to keep debris out and improve appearance.



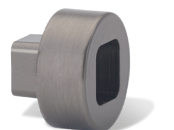
Panic Arm Conversion Kit

Allows panic release feature to be disabled.



Trilennium Lever Spacer Kit

Extends Trilennium® lever 1/2" out from the door panel for extra clearance on doors with decorative panels. Maximum two spacers can be used for 1" clearance.





### Don't Just Take Our Word For It.

With Trilennium, strength, quality and reliable performance are more than just marketing fluff. We're committed to ensuring this performance through rigorous testing, competitive warranties and meticulous quality inspections to deliver a product you can proudly stand behind.

### Top Quality. Our Promise.

When you order your handsets through Endura Products, we ensure that you receive the proper product to drive your system, regardless of your application. Our Quality Assurance group individually inspects each handle set for proper design, function, handing and finish. If an issue does arise, we're standing by with spare parts on hand to repair or replace, saving you time and headaches.

### Trilennium Testing Results

#### ASTM E 2395

	GRADE 10	GRADE 20	GRADE 30
Test 1, At Lock, Static Load	300 lbf	500 lbf	800 lbf
Test 2, At Lock and Corner, Static Loads	300 lbf	500 lbf	800 lbf
Test 3, At Lock, Impact Loads	300 ft-lb x 2	300 ft-lb x 2	300 ft-lb x 2

Specification ASTM E 2395 measures the resistance of the door assembly to forced entry by an intruder. The higher the grade the unit passes, the greater the unit's strength, security and performance. Trilennium® Multi-Point Series 3000 and 3070 surpassed Grade 30 in dynamic entry testing.